

**Frames & Banner Rails**



**Sign & Poster Stands**



**Display & Exhibit Modules**



**Banner Stands**



**Trade Show Stands**



**Pop-Up Stands**



**A Family of Dependable Displays™**

Since the invention of Flexiframe in 1985, Mark Bric has, year-by-year, developed a complete programme of easy to use, reliable and economically priced display and exhibition products. Directed at the sign, retail and trade show industries worldwide, it is now probably the most comprehensive product range on the market for indoor displays. Our network of distributors and dealers in over 70 countries around the globe, guarantees that all our existing and future clients, will have the best possible advice and service on all Mark Bric products. Whenever and wherever your next presentation event takes place... **We get your message across®.**



9436 05/15.11.2003

# Modular Display & Exhibition System



**The ideal system for all types of public presentations**



# Saving money and effort are only two of its qualities

With an unlimited budget and great resources in general, there certainly are more expensive systems to be found on the market. But where low marketing costs, good function and attractive looks are of vital interest,

*Flexiframe is just the alternative.*

Here you will find all high-value benefits, familiar to many users in more than 70 countries. The system is thoroughly tested and well established within many fields and on many occasions where creating high interest is most important.

## Ideal for posters and prints

The Flexiframe display and exhibition system highly simplifies the handling of posters, digital prints, pictures, texts, graphics and decorations for public presentations. Moreover, in some applications it is very useful for product exposure.

## Stable and functional design

The basic element of the system is a frame, made of impact resistant polyvinyl plastic. The rigid profile has an inner groove for panels and an outer groove for metal connectors or poles, to join the frames together.

## Smart and simple

The Flexiframe system is very easy to work with. The precision crafted components make assembly simple. You do not need any special skills or tools.



**Mark Bric** **FLEXIFRAME**<sup>®</sup>  
A Family of Dependable Displays

## Another tempting choice to make:

Using the standard units or aiming at an individual way of presenting your exhibition material? Or combining the possibilities? Your needs and/or imagination will decide.

## Flexiframe, an easy-to-use modular system

As the name Flexiframe states – it allows you to choose between different numbers, sizes and colours of the frames. Different shapes, floor areas and angles of the screens.

Sections, with frames and panels, can be combined in innumerable ways. All for temporary or permanent use.



**Great variety of applications from small point-of-purchase units to big trade show stands**

## A representative show-wall in just a couple of minutes



Easy to transport.



All parts packed in the bag.



Quick and simple to assemble.  
*Clear assembly instructions included.*



Extremely light weight.



**See reverse for  
our popular exhibition kits**

# Reliable exhibition modules for the "regular" user

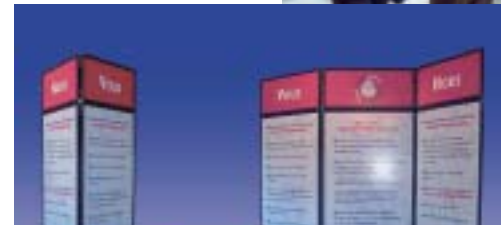


A "Basic 6" backwall with the company logo in a header frame and a table is a very useful display module. Posters, as well as a metal mesh with hooks for hanging product samples, are used in the frame sections.

Maybe you do not want to spend a fortune on your next exhibition and public presentation. You may already have posters and prints, which you wish to use. What you need is just an easy-to-use and attractive system to do the job. A system suitable not only for the professionals, but even more for the "regular" user with limited experience and time in arranging exhibitions. Flexiframe's large selection of standard exhibition modules is certainly the right choice.



A "Cross" module has room for a lot of information, in a limited space, by using both sides of the frames for graphics.



To use velcro panels in some of the frames is a very practical solution for attaching messages, prints, paper sheets in the smaller format.



A Flexiframe display wall offers an attractive background during a hotel exhibition.

The Flexiframe system is based on some very simple and obvious principles

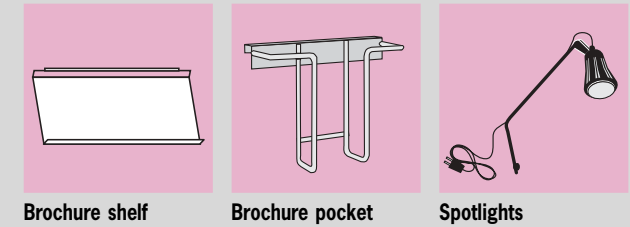


The desired panels are easily loaded into the frames, which are then linked together by means of metal connectors. Various types of insert panels can be used with the frames. For example, velcro panels with nylon loop fabric (see picture) or light weight foam centred boards, often combined with a transparent sheet of plastic to protect and hold posters and prints in position.

They raise the impact of your presentation

The system includes some useful items: spotlights, brochure shelves and brochure pockets, making the printed material more accessible and the total display more visible.

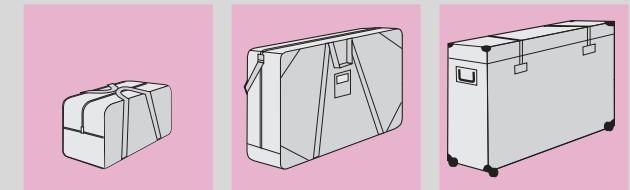
## Brochure holders / Spotlights



Brochure shelf Brochure pocket Spotlights

The light weight exhibition kits can be easily stored and transported in special bags with shoulder straps and in transport cases on wheels.

## Carrying bags/cases



Accessory bag Carrying bags for backwalls Hard plastic case on wheels

## Colours of Flexiframe

White (51)	Beige (58)
Grey (52)	Grey metallic (59)
Red (53)	Yellow (60)
Blue (54)	Teal (61)
Black (55)	Burgundy (62)
Brown (56)	Purple (63)
Green (57)	Hunter green (64)

## Colours of velcro panels

02	03	04	05
06	07	08	09

## The Complete Exhibition Kits – our bestsellers!



Standard kit, item 7003

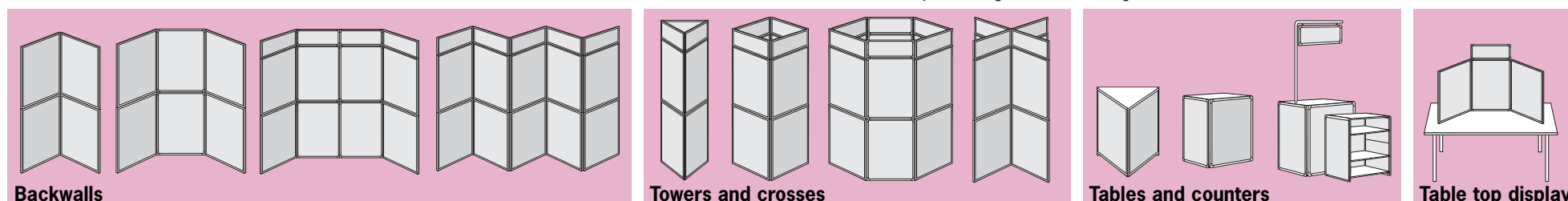
Contains all you need for a successful presentation. Basic 8 frame backwall unit with 4 headers, 2 brochure pockets, 4 spotlights and 2 carrying bags or 1 hard case. The "Standard Kit", item 7003, has 2 soft bags and regular spotlights. The "Luxus Kit", item 7013, has a hard transport case on wheels and halogen spotlights.



Luxus kit, item 7013

## Mark Bric standard exhibition modules

The basic section of a frame in our standard units is 70x100 cm and the header frame is 70x30 cm. Any size is possible on request.



Backwalls

Towers and crosses

Tables and counters

Table top display



## Tailor-made solutions with Flexiframe

The system is ideal for making modules in an individual way, or finding a solution to a specific display problem. By using different sizes, colours, shapes and combinations of frames and panels, the possibilities are innumerable. These unique qualities, combined with a very attractive price, make the system extremely suitable for designing and building displays for point-of-purchase.



Flexiframe is ideal for redesigning your display and adapts beautifully to various display needs in the shop. Use the same frames for both a backwall solution and a triangular tower. The floor space and/or the direction of the passers by will decide.

**See reverse for more exciting Flexiframe special applications**

# Trade show stands with the same simple principles

To rent exhibition material from an exhibition organiser is usually very expensive. What may be even more of a problem, your stand will look very much like everyone else at the show. Instead, to purchase a Flexiframe system, makes good economic sense and gives you a chance to really stand out from the crowd. Take advantage of the colour and design possibilities offered by Flexiframe. Use the system a second time and you are likely to be saving money, compared to renting. And why not use it also in between the trade shows, in original or in rebuilt form. For example in the reception area and show-room of your company.



A strong red colour, with attractive graphics, really catches the attention of the visitors.



This stand offers a conference room and space for graphics and products. A classic and elegant solution.



Build big and high! There are very few limitations with the Flexiframe system.

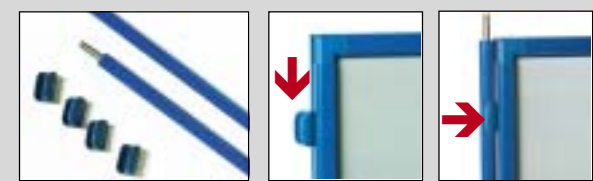
Towers and table units form this impressive stand. Metal mesh is used in the frames to give a high-tech impression.



## ShowUp

– using poles and clips make the stands easy to build and even more sturdy

The poles (100, 41 and 30 cm) are joined together vertically with an inner screw.



Slide the pole clips down the outer groove of the frame and the frame is then snapped on to the pole.



It is then easy to build upwards and sideways into the desired configuration.

The frames can be rotated steplessly sideways.

# Ideal for high volume point-of-purchase displays



A practical display solution. The hole in the table top holds the tyre in place.



Separate frames, for the exposure of different brands, makes the display very clear.



Flexiframe leaves plenty of room for your creativity.



Please note the practical "footer" at the bottom of the display. It avoids kicking on the actual graphic.

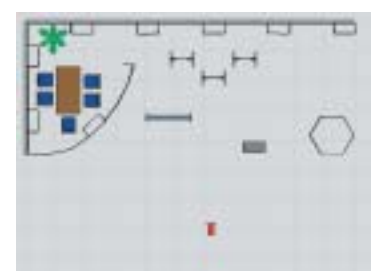


Built in tables for the display of computers.



## Mark Bric EcDesign

Our unique computer programme to visualise your ideas in 3D, before building the complete trade show stand. Valuable also for checking the costs before starting the project. Please contact us for more details and a demonstration!



Build up the scene (a trade show stand, a show-room, a reception area etc.) in 2D.



Press a button and the scene is automatically transformed into 3D.



EcDesign contains not only the Flexiframe products, but also the SnapUp and BannerUp product range.